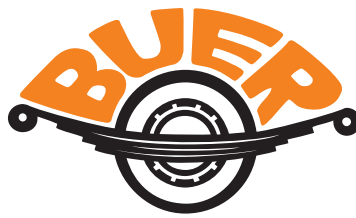
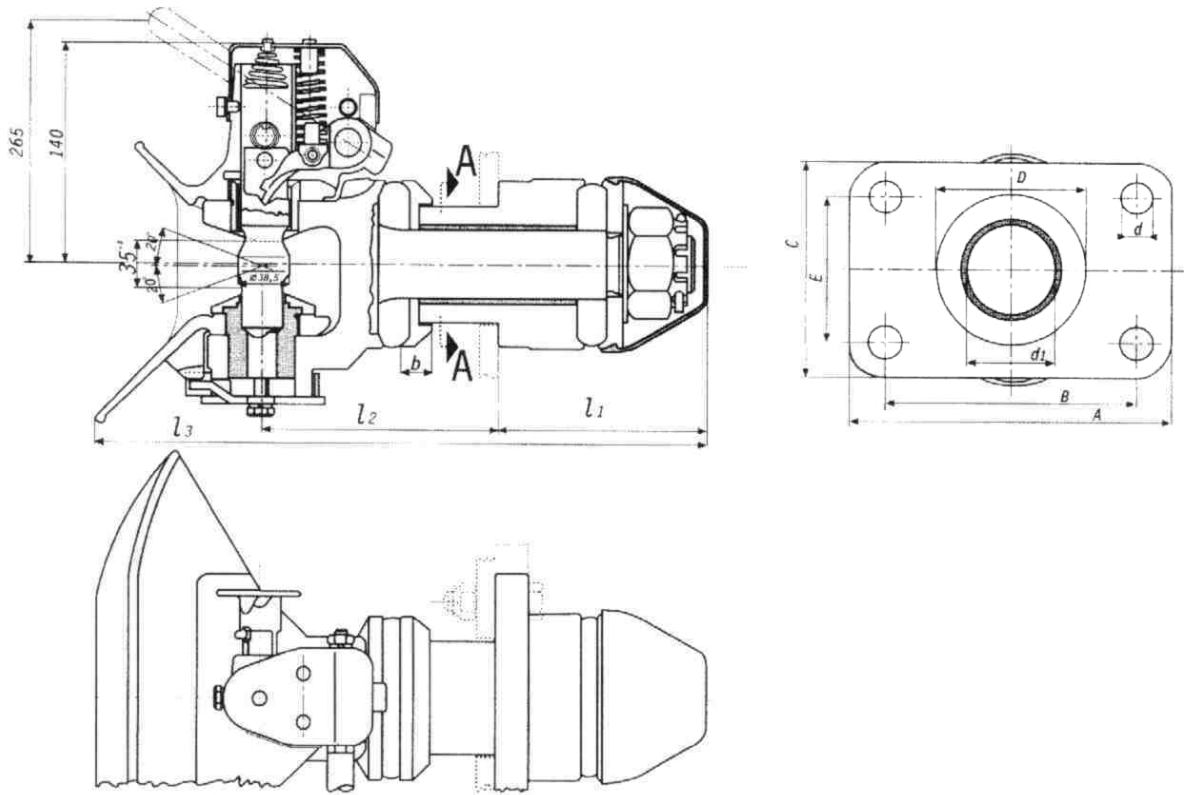


**Trailer Couplings
AC 135, 140, 150 Type**



Trailer Coupling AC 135, 140, 150 Type



Type	Hole Pattern	Size of Plate	D-Value	M	Dimensions							ECE Homologation
					D	d	d1	l1	l2	l3	b	
AC 135 G135	B x E	A x C	KN	Nm	D	d	d1	l1	l2	l3	b	No. of certificate
AC 135 G135	120 x 55	155 x 90	70	300-400	74	15	26	148	157	435	21	Br 55-E10, 067/83 IMVV
AC 140 G145	140 x 80	180 x 120	100	400-500	84	17	32	152	172	454	23	e11*94/20* 3759
AC 150 G150	160 x 100	200 x 140	120	400-500	94	21	32	152	172	454	23	e11*94/20* 3760

Subject to technical changes without prior notice

Type A = Action Lever upwards
Type B = Action Lever downwards

M = Tensile Force of Main Screw

Permitted Turning Radius of Towing Eyelet

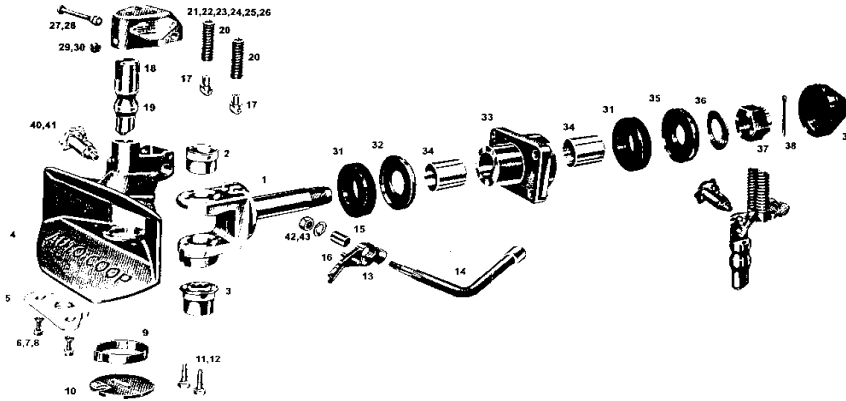
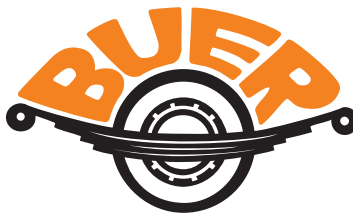
- Horizontal $\pm 95^\circ$
- Vertical $\pm 20^\circ$
- Axial 360° with min. turning Force of 100 Nm

Manufactured according to DIN 74051 for 40 mm drawbar eyes (DIN 74054)



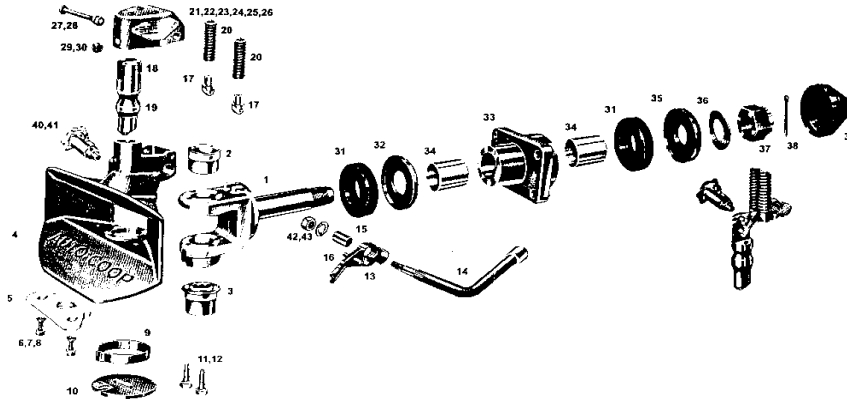
Helmut Buer GmbH & Co. KG
Am Leveloh 11
D-45549 Sprockhövel

Tel: +49(0)2324/90291-0
Fax: +49(0)2324/77 33-0
Email: info@buer-kg.de
Web: www.buer-kg.de



Spare parts for the automatic trailer coupling AC 140 G145

Pos.	Description	Qty.	Article Number
1	Tie-rod, incl. Pos. 2,36,37,38	1	1.02.063.00.00.01
2	Guide	1	1.02.057.00.00.02
3	Inlet sleeve	1	1.02.057.00.00.03
4	Bell mouth, incl. Pos. 40,41	1	1.02.057.00.00.04
5	Inlet plastic plate, incl. Pos. 6,7,8	1	1.02.057.00.00.05
6	Screw M8x30, DIN 965	2	JUS M.B1.130 DIN 965
7	Washer A8, DIN 128	3	JUS M.B2.110 DIN 128
8	Nut M8, DIN 934	2	JUS M.B1.601. DIN 934
9	Return spring	1	1.02.057.00.00.09
10	Tab Washer	1	1.02.057.00.10.00
11	Screw M10x35, DIN 935, incl. Pos. 12	2	JUS M.B1.053 DIN 935
12	Washer A10, DIN 128	2	JUS M.B2.110 DIN 128
13	Locking lever	1	1.02.057.00.00.13
14	Action lever, incl. Pos. 13,15,16,42,43	1	1.02.057.00.00.14
15	Spacer	1	1.02.057.00.00.50
16	Bolt	1	1.02.057.00.00.16
17	Spring supporter	1	1.02.057.00.00.17
18	Bolt pin	1	1.02.057.00.00.18
19	Coupling pin, incl. Pos. 18,20	1	1.02.057.00.00.19
20	Pin lever spring	2	1.02.057.00.00.20
21	Mechanism unit, incl. Pos. 24,25,26	1	1.02.057.00.01.00
22	Type label, incl. Pos. 23	2	1.02.064.00.00.22
23	Rivet A3x6x6, DIN 7331	2	JUS M.B3.011
24	Spring	1	1.02.057.00.01.24
25	Rivet 6x12, DIN 660	2	JUS M.B3.011
26	Springs guide	2	1.02.057.00.01.26
27	Screw M10x85, DIN 931 incl. Pos. 28	1	JUS M.B1.050 DIN 931
28	Locknut VM 10, DIN 980	1	JUS M.B1.601 DIN 934
29	Screw M8x8, DIN 933 incl. Pos. 7	1	JUS M.B2.053 DIN 128
31	Silent block	2	1.02.063.00.00.31
32	Front flange	1	1.02.063.00.00.32
33	Coupling flange incl. Pos. 34	1	1.02.064.00.02.33
34	Internal bush	1	1.02.063.00.02.34
35	Rear flange	1	1.02.063.00.00.35
36	Washer B 36(45), DIN 137	1	1.02.063.00.00.36
37	Castellated nut M36(45)x3, DIN 935, incl. Pos 38	1	JUS M.B2.632 DIN 935 (M45x3)
38	Split pin 6,3x63 bzw. 8x80, DIN 94	1	JUS M.B2.300 DIN 94
39	Dust protection hood	1	1.02.063.00.00.39
40	Security device, incl. Pos. 41	1	1.02.057.00.03.00
41	Grease nipple AM8x1, DIN 71412	1	
42	Locknut VM 14, DIN 980	1	JUS M.B1.601 DIN 980
43	Washer B 15, DIN 125	1	JUS M.B2.011 DIN 125



Spare parts for the automatic trailer coupling AC 150 G150

Pos.	Description	Qty.	Artikelnummer
1	Tie-rod, incl. Pos. 2,36,37,38	1	1.02.063.00.00.01
2	Guide	1	1.02.057.00.00.02
3	Inlet sleeve	1	1.02.057.00.00.03
4	Bell mouth, incl. Pos. 40,41	1	1.02.057.00.00.04
5	Inlet plastic plate, incl. Pos. 6,7,8	1	1.02.057.00.00.05
6	Screw M8x30, DIN 965	2	JUS M.B1.130 DIN 965
7	Washer A8, DIN 128	3	JUS M.B2.110 DIN 128
8	Nut M8, DIN 934	2	JUS M.B1.601. DIN 934
9	Return spring	1	1.02.057.00.00.09
10	Tab Washer	1	1.02.057.00.10.00
11	Screw M10x35, DIN 935, incl. Pos. 12	2	JUS M.B1.053 DIN 935
12	Washer A10, DIN 128	2	JUS M.B2.110 DIN 128
13	Locking lever	1	1.02.057.00.00.13
14	Action lever, incl. Pos. 13,15,16,42,43	1	1.02.057.00.00.14
15	Spacer	1	1.02.057.00.00.50
16	Bolt	1	1.02.057.00.00.16
17	Spring supporter	1	1.02.057.00.00.17
18	Bolt pin	1	1.02.057.00.00.18
19	Coupling pin, incl. Pos. 18,20	1	1.02.057.00.00.19
20	Pin lever spring	2	1.02.057.00.00.20
21	Mechanism unit, incl. Pos. 24,25,26	1	1.02.057.00.01.00
22	Type label, incl. Pos. 23	2	1.02.064.00.00.22
23	Rivet A3x6x6, DIN 7331	2	JUS M.B3.011
24	Spring	1	1.02.057.00.01.24
25	Rivet 6x12, DIN 660	2	JUS M.B3.011
26	Springs guide	2	1.02.057.00.01.26
27	Screw M10x85, DIN 931 incl. Pos. 28	1	JUS M.B1.050 DIN 931
28	Locknut VM 10, DIN 980	1	JUS M.B1.601 DIN 934
29	Screw M8x8, DIN 933 incl. Pos. 7	1	JUS M.B2.053 DIN 128
31	Silent block	2	1.02.063.00.00.31
32	Front flange	1	1.02.063.00.00.32
33	Coupling flange incl. Pos. 34	1	1.02.064.00.02.33
34	Internal bush	1	1.02.063.00.02.34
35	Rear flange	1	1.02.063.00.00.35
36	Washer B 36(45), DIN 137	1	1.02.063.00.00.36
37	Castellated nut M36(45)x3, DIN 935, incl. Pos 38	1	JUS M.B2.632 DIN 935 (M45x3)
38	Split pin 6,3x63 bzw. 8x80, DIN 94	1	JUS M.B2.300 DIN 94
39	Dust protection hood	1	1.02.063.00.00.39
40	Security device, incl. Pos. 41	1	1.02.057.00.03.00
41	Grease nipple AM8x1, DIN 71412	1	
42	Locknut VM 14, DIN 980	1	JUS M.B1.601 DIN 980
43	Washer B 15, DIN 125	1	JUS M.B2.011 DIN 125