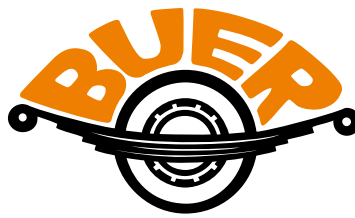
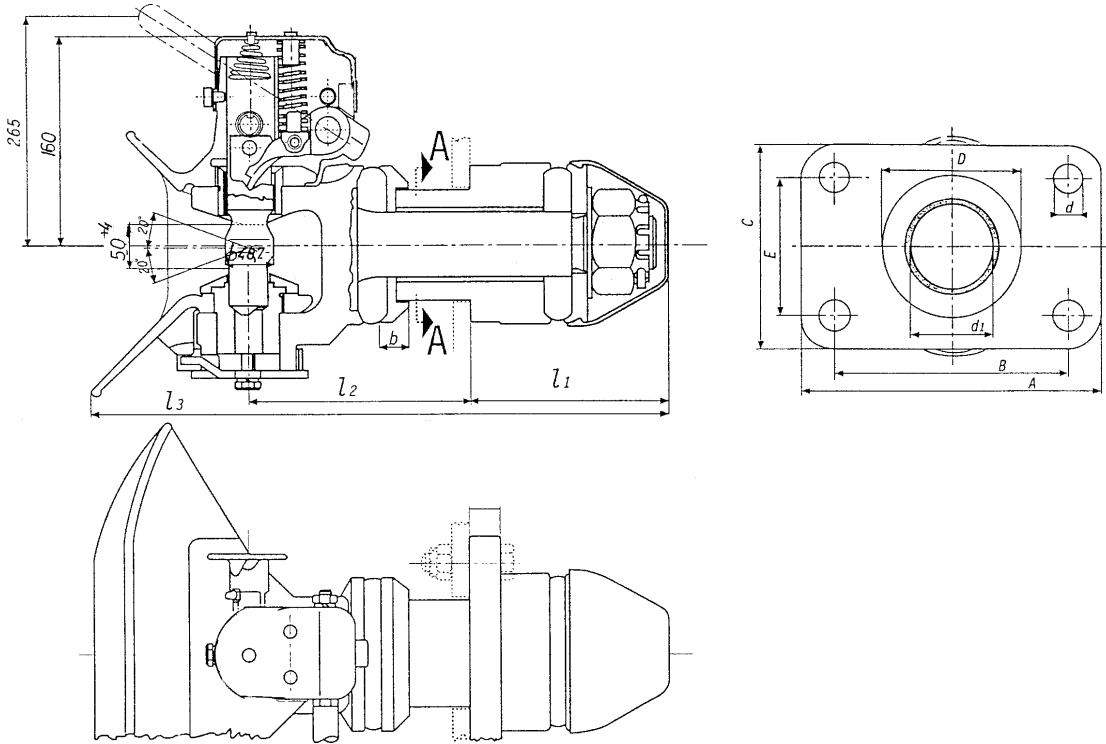


**Trailer Coupling  
AC 81 G5 Type**



Trailer Coupling  
AC 81 G5 Type



Type	Hole Pattern	Size of Plate	D-Value	M	Dimensions					
					D	d	d1	l1	l2	l3
AC 81 G5	160 x 100	200 x 140	190	600	94	21	58	220	170	494

Subject to technical changes without prior notice

Type A = Action lever upwards  
Type B = Action lever downwards

M = Tensile Force of Main Screw

Permitted Turning Radius of Towing Eyelet

- Horizontal            ±110°
- Vertical                ±20°
- Axial                    360°

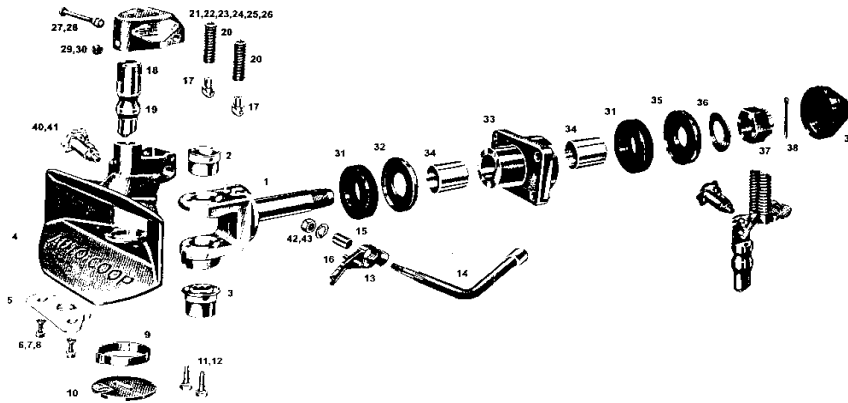
For 50 mm drawbar eyes (DIN 74053)

**TÜV tested.**



Helmut Buer GmbH & Co. KG  
Am Leveloh 11  
D-45549 Sprockhövel

Tel: +49(0)2324/90291-0  
Fax: +49(0)2324/77 33-0  
Email: info@buer-kg.de  
Web: www.buer-kg.de



Spare parts for the automatic trailer coupling AC 81 G 5

Pos.	Spare Part Name	Qty.	All Types
1	Tie-rod, incl. Pos. 2,36,37,38	1	1.02.090.00.00.01
2	Guide	1	1.02.090.00.00.02
3	Inlet sleewe	1	1.02.090.00.00.03
4	Bell mouth incl. Pos. 40,41	1	1.02.090.00.00.04
5	Inlet plastic plate incl. Pos. 6,7,8	1	1.02.100.00.00.05
6	Srew M8x45, DIN 965	2	JUS M.B1.130
7	Washer A8, DIN 128	3	JUS M.B2.110
8	Nut M8, DIN 980	2	JUS M.B1.601
9	Restoring spring	1	1.02.090.00.00.09
10	Plate with crown	1	1.02.090.00.10.00
11	Screw M10x45, DIN 933 incl. Pos. 12	2	JUS M.B1.053
12	Washer A10, DIN 128	2	JUS M.B1.110
13	Pin lever	1	1.02.090.00.00.13
14	Action lever, incl. Pos. 13,15,16,42,43	1	1.02.090.00.00.14
15	Spacer	1	1.02.090.00.00.15
16	Bolt	1	1.02.057.00.00.16
17	Spring supporter	1	1.02.057.00.00.17
18	Bolt-pin	1	1.02.090.00.00.18
19	Coupling pin	1	1.02.090.00.00.19
20	Pin lever spring	2	1.02.057.00.00.20
21	Mechanism unit incl. Pos. 24,25,26	1	1.02.090.00.01.00
22	Type label incl. Pos. 23	2	1.02.100.00.01.22
23	Rivet A3x6x6, DIN 7331	2	JUS M.B3.011
24	Spring	1	1.02.057.00.01.26
25	Rivet , DIN 1476	2	1.02.057.00.01.24
26	Spring's guide	2	JUS M.B3.011
27	Screw M10x90, DIN 931 incl. Pos. 28	1	JUS M.B1.050
28	Locknut VM 10, DIN 980	1	JUS M.B1.601
29	Screw M8x12, DIN 933 incl. Pos. 7	1	JUS M.B1.053
31	Silent block	2	1.02.090.00.00.31
32	Front flange	1	1.02.090.00.00.32
33	Coupling flange	1	1.02.100.00.02.33
34	Internal bush	1	1.02.100.00.02.34
35	Rear flange	1	1.02.090.00.00.35
36	Washer B 56, DIN 137	1	1.02.063.00.00.36
37	Nut M 56x2, DIN 935 incl. Pos 38	1	JUS M.B1.632
38	Split pin 8x100, DIN 94	1	JUS M.B2.300
39	Dust-protection hood	1	1.02.090.00.00.39
40	Security device inkl. Pos. 41	1	1.02.057.00.03.00
41	Grease nipple AM8x1, DIN 71412	1	JUS M.C4.613
42	Locknut VM 14, DIN 980	1	JUS M.B1.622
43	Washer B 15, DIN 125	1	JUS M.B2.011
	Repair kit incl. Pos. 2,3,5,19,38	1	1.02.100.00.00.99