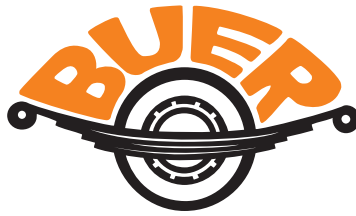
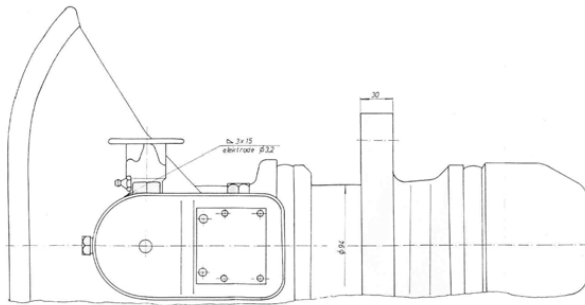
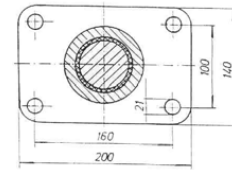
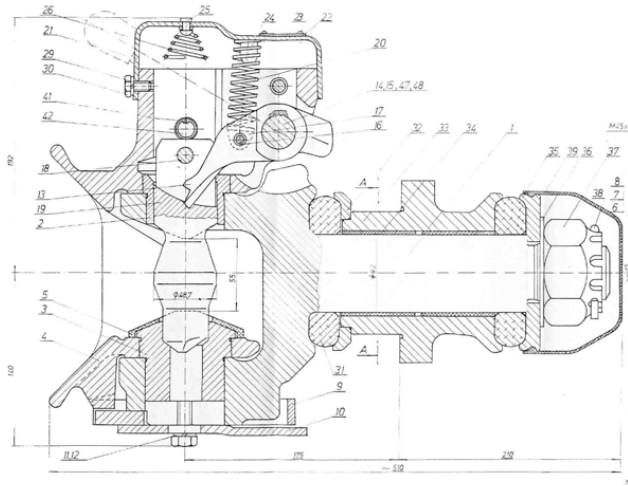


**Trailer Coupling
AC-C50-7 Type**



Trailer Coupling AC-C50-7 Type



Class / Type	Hole Pattern	Size of Plate	D-Value	Dc-Value	S1-Value	S2-Value	V1-Value	V2-Value
C50-X AC-C50-7	160x100	200x140	190 kN	123 kN	1.000 kg	2.000 kg	75 kN	50 kN

Type A = Action lever upwards
Type B = Action lever downwards

Recommended Torque at Installation = 600 Nm

Permitted Turning Radius of Towing Eyelet

- Horizontal $\pm 110^\circ$
- Vertical $\pm 20^\circ$
- Axial 360°

For 50mm Drawbar Eyes

Homologation 94/20/EC Directive: e11 No.: *94/20*3922*00
ECE: 55.01 No.: 55R-013922



Helmut Buer GmbH & Co. KG
Am Leveloh 11
D-45549 Sprockhövel

Tel: +49(0)2324/90291-0
Fax: +49(0)2324/77 33-0
Email: info@buer-kg.de
Web: www.buer-kg.de